

[REDACTED]

HAIRCUTTING

[REDACTED]

SAFETY AND DISINFECTION

INFECTION

What is an Infection?

What causes an Infection?

1. _____

2. _____

Signs of an Infection

1. _____

2. _____

3. _____

4. _____

5. _____

Describe the difference between Contamination and Decontamination:

What methods can be used to fight Contamination?

1. _____

2. _____

3. _____

4. _____

How does Porous or Nonporous affect cleaning and disinfecting?

What government regulations or guidelines help to protect against health hazards?

Describe Exposure Incident:

BLOODBORNE PATHOGEN STANDARD PROCEDURE

8 step procedure *exposure to blood*

1. _____
// If you are the person who has been cut, _____ the service and clean your injured area.
// If your Guest has been cut, _____ the service, put on protective gloves and clean the injured area.
2. _____
Use _____ and/or liquid or spray _____ as appropriate.
3. _____
_____ the injury with the appropriate dressing.
4. _____
_____ injured area with finger guard or glove as appropriate.
5. _____
_____ all tools and work station with EPA-registered disinfectant.
6. _____ - _____
_____ of all contaminated materials in a clearly labeled bag.
7. Fill out an _____ when applicable.
8. _____ to service.

CHECK YOUR STATE LAWS AND REGULATORY AGENCIES FOR ANY SPECIFICS REGARDING BLOOD SPILL PROCEDURES.

DOWN

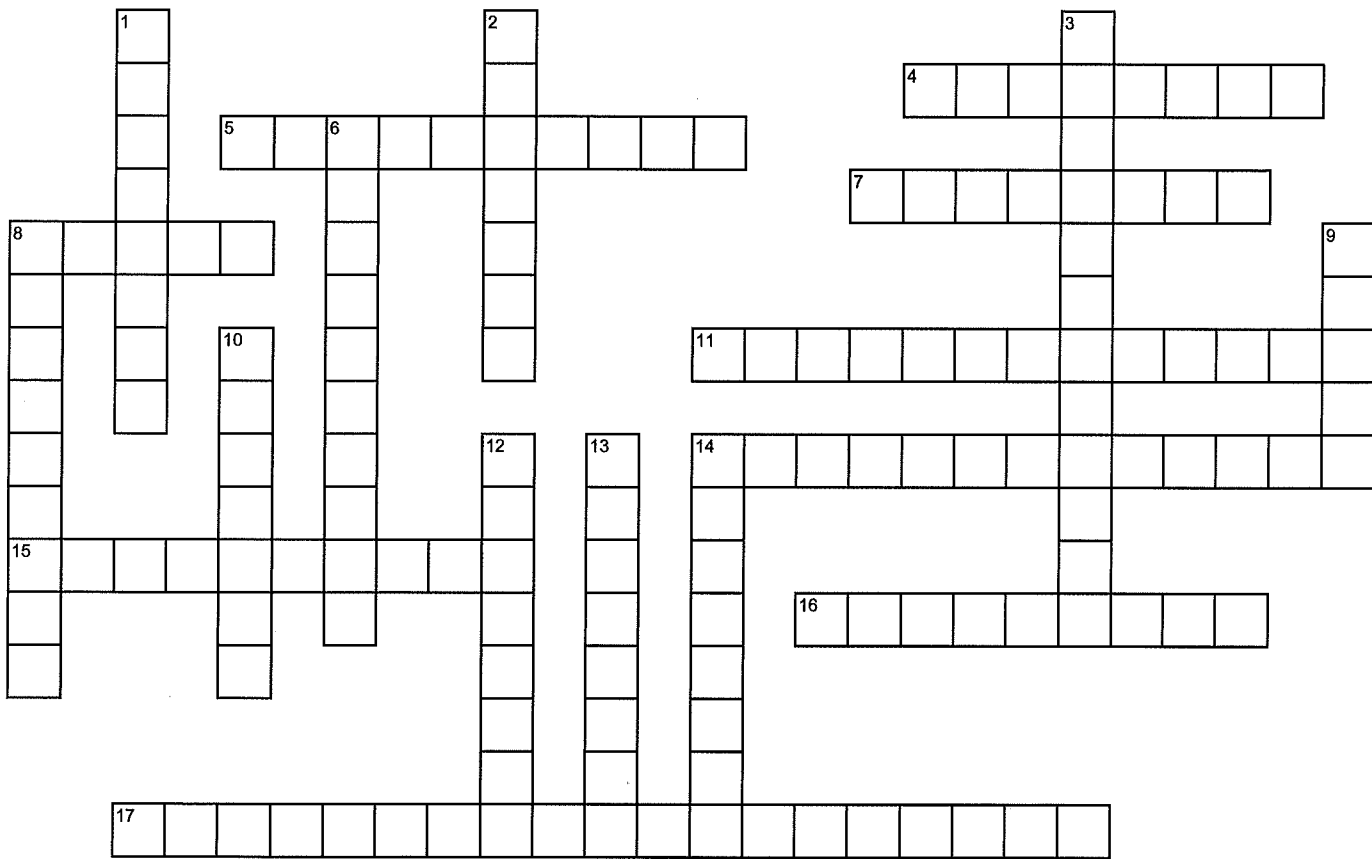
1. self-movement
 2. long, rod-shaped bacteria that cause tetanus, tuberculosis and influenza
 3. bacteria shaped into chains that grow in curved lines and cause strep throat and blood poisoning
 6. bacteria that are harmful and cause disease
 8. the same characteristics as a furuncle, but larger
 9. circular-shaped bacteria
 10. bacterial invasion of the body that disrupts normal function of health
 12. an ailment or illness that disrupts a normal function of health
 13. boil or abscess of the skin located in the hair follicle
 14. spiral-shaped bacteria that cause syphilis and lyme disease
-
-

ACROSS

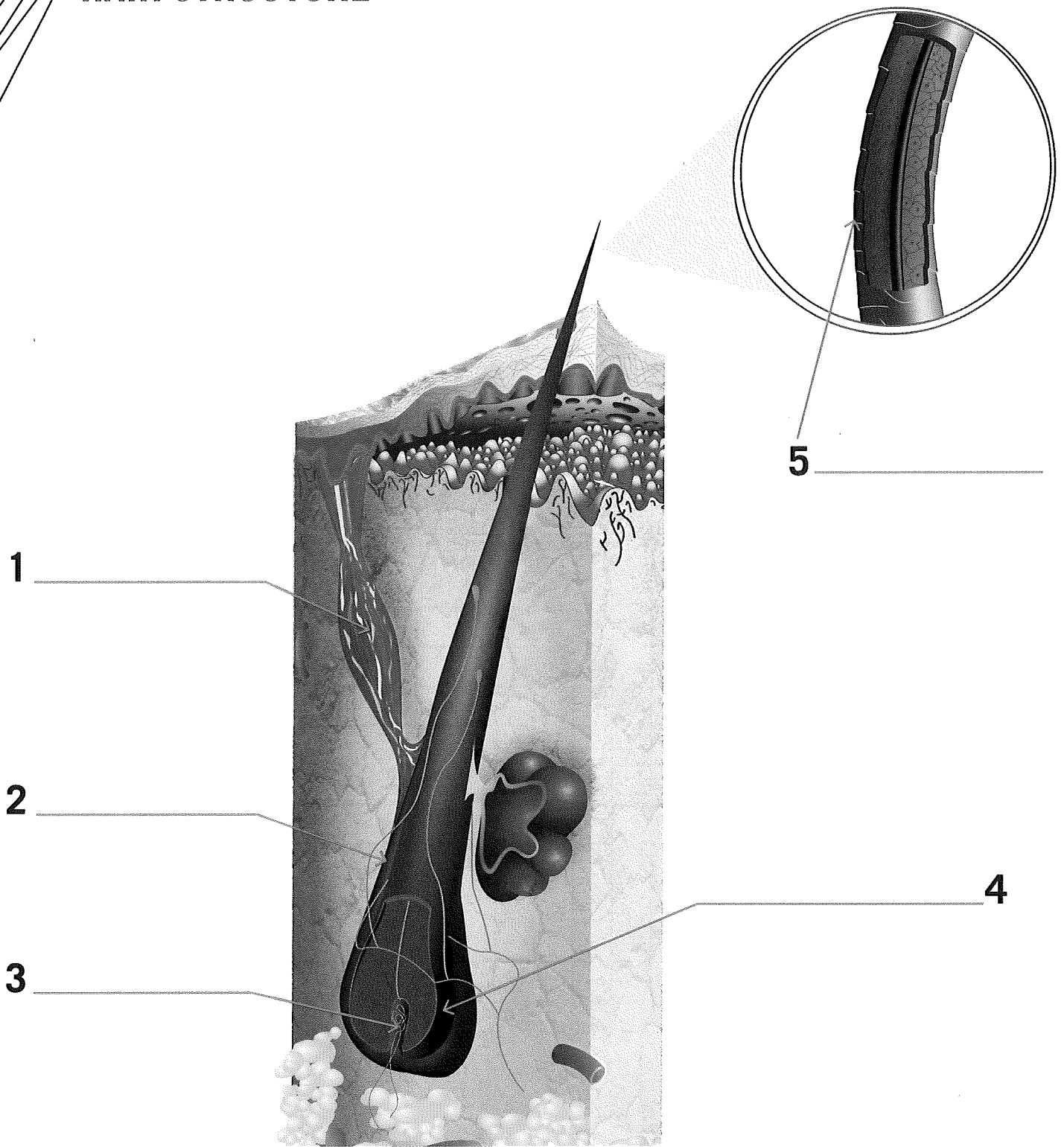
4. one-celled microorganisms
5. spherical-shaped bacteria that grow in pairs and cause pneumonia
7. long appendages that propel bacteria through liquid
8. hair-like projections that help bacilli and spirilla to move
11. bacteria that are not harmful
14. bacteria that grow in clusters and infect the skin and/or scalp
15. infections or diseases that can be transferred from one person to another by contact
16. pathogenic bacteria that live on or inside another organism
17. infectious pathogenic microorganisms that are present in human blood and can cause disease

DISORDERS AND DISEASES

CROSSWORD PUZZLE



HAIR STRUCTURE



• Arrector Pili

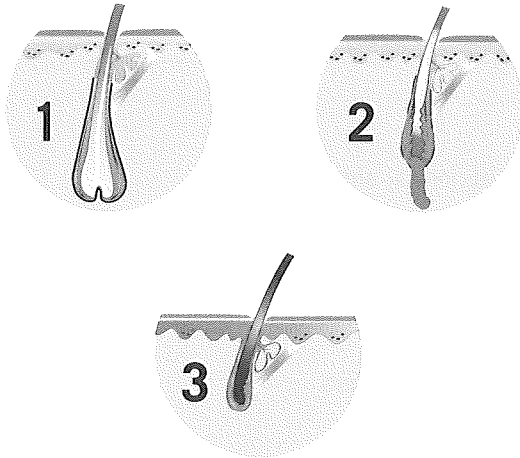
• Cuticle

• Dermal Papilla

• Follicle

• Hair Bulb

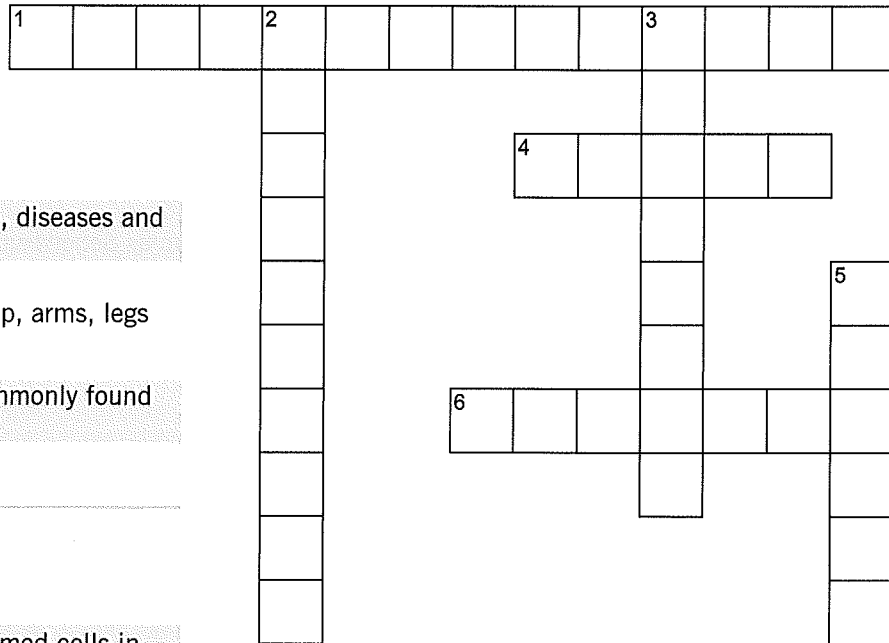
STAGES OF HAIR GROWTH



1. _____ period of active growth
2. _____ period of breakdown and change
3. _____ period of rest

STAGES OF HAIR GROWTH

CROSSWORD PUZZLE



DOWN

2. the study of hair, disorders, diseases and hair care
3. pigmented hair on the scalp, arms, legs and in the nose and ears
5. soft, white, downy hair commonly found on newborn babies

ACROSS

1. process by which newly formed cells in the hair bulb mature
4. all hair goes through how many stages of growth
6. strong, fibrous protein derived from amino acids that make up hair and nails

DISORDERS OF THE SCALP AND HAIR

WORD SEARCH

-
-
1. _____ hair loss in abnormal amounts
 2. _____ patches of hair loss
 3. _____ balding on the entire head
 4. _____ balding over the entire body
 5. _____ male or female pattern baldness
 6. _____ is naturally shed
 7. _____ brittle hair
 8. _____ beaded hair
 9. _____ commonly known as dandruff
 10. _____ also known as Seborrheic Dermatitis
 11. _____ period of temporary hair loss after childbirth
 12. _____ hair is prematurely pushed into the telogen stage
 13. _____ hair loss due to excessive pulling or stretching of the hair
 14. _____ split ends
 15. _____ knotted hair

DISORDERS OF THE SCALP AND HAIR

WORD SEARCH

S T R I C H O R R E H E X I S N O D O S A D
P I Q R P O S T P A R T U M A L O P E C I A
F L L A L O P E C I A T O T A L I S V K L B
L A F A W M K G T K H C K J T N P B N W A Q
H P N W S R G L Z X R F N R V L T F N T F T
X T B D N R V F Z R T F I T W Z R G A J A R
I C E F R R E R X K G C D X D A Y E Y G L A
R K T L K O T V M G H Y N G G L R D L V L C
H Y Q D O V G Z I O R S T I L A M T K A E T
T T P T X G T E P N I T L F A F J K Z I N I
E M Z T F Q E T N S U I W I R D G B F C H O
L X D Q R Q I N A I T A C H L H K T R E A N
I G B M M L G I E A C E I T F V P M L P I A
N B M Q O P R Q S F P A J C N K G K P O R L
O T M S B Y B C T O F C L J E K X M F L Z O
M V I X T T R Q L N Q L L O R P M R P A K P
B S F I T I Z A D K K R U K P Q O M H F F E
G K P K N L M M W L G L D V B E F L C C N C
L T Q I Z Z N P Z K Y H K P I L C Y A W F I
T B U K T T P Y H R Q N X L Y U L I C M W A
G M X P V D J L L M M F F L T D M K A M R T
N P I T Y R I A S I S S T E A T O I D E S J

DISEASES OF THE SCALP AND HAIR

1. A condition caused by an animal parasite called the head louse is:

- a) Tinea b) Pediculosis Capitis c) Mildew d) Alopecia

2. A contagious disease caused by a fungal parasite called dermatophyte, also known as Ringworm, is:

- a) Fungi b) Hirsuties c) Terminal Hair d) Tinea

3. A member of a large group of organisms that include microorganisms, such as yeasts, molds and mildews. Some common scalp and hair diseases are caused by this:

- a) Virus b) Fungi c) Ringworm d) Beau's Line

4. A fungal infection characterized by a pink scalp with thick, whitish-yellow crusts known as scutula, and also known as Honeycomb Ringworm, is:

- a) Tinea Favosa b) Mildew c) Syphilis d) Tinea Pedis

5. A condition caused by the microscopic mite called sarcoptes scabiei, and also known as the itch mite, is:

- a) Fungi b) Tinea c) Scabies d) Systemic

6. A fungal infection of the scalp that is caused when fungus attacks the opening of the follicle, making the scalp slightly pink with red spots and a white, scaly appearance is:







- a) Tinea b) Fragilitas Crinium c) Pityriasis d) Tinea Capitis

7. A superficial fungal infection that commonly affects the skin and is also known as Barber's Itch:

- a) Tinea Barbae b) Tinea Favosa c) Mildew d) Scabies



DISORDERS AND DISEASES OF THE SCALP


Fill in the identifying characteristics and examples for each disorder.

DISORDERS OF THE SCALP	CHARACTERISTICS	EXAMPLE	SERVICE
Pityriasis			
Pityriasis Steatoides			
Alopecia			
Alopecia Areata			
Alopecia Totalis			
Alopecia Universalis			
Androgenic Alopecia			
Telogen Effluvium			
Postpartum Alopecia			
Traction Alopecia			

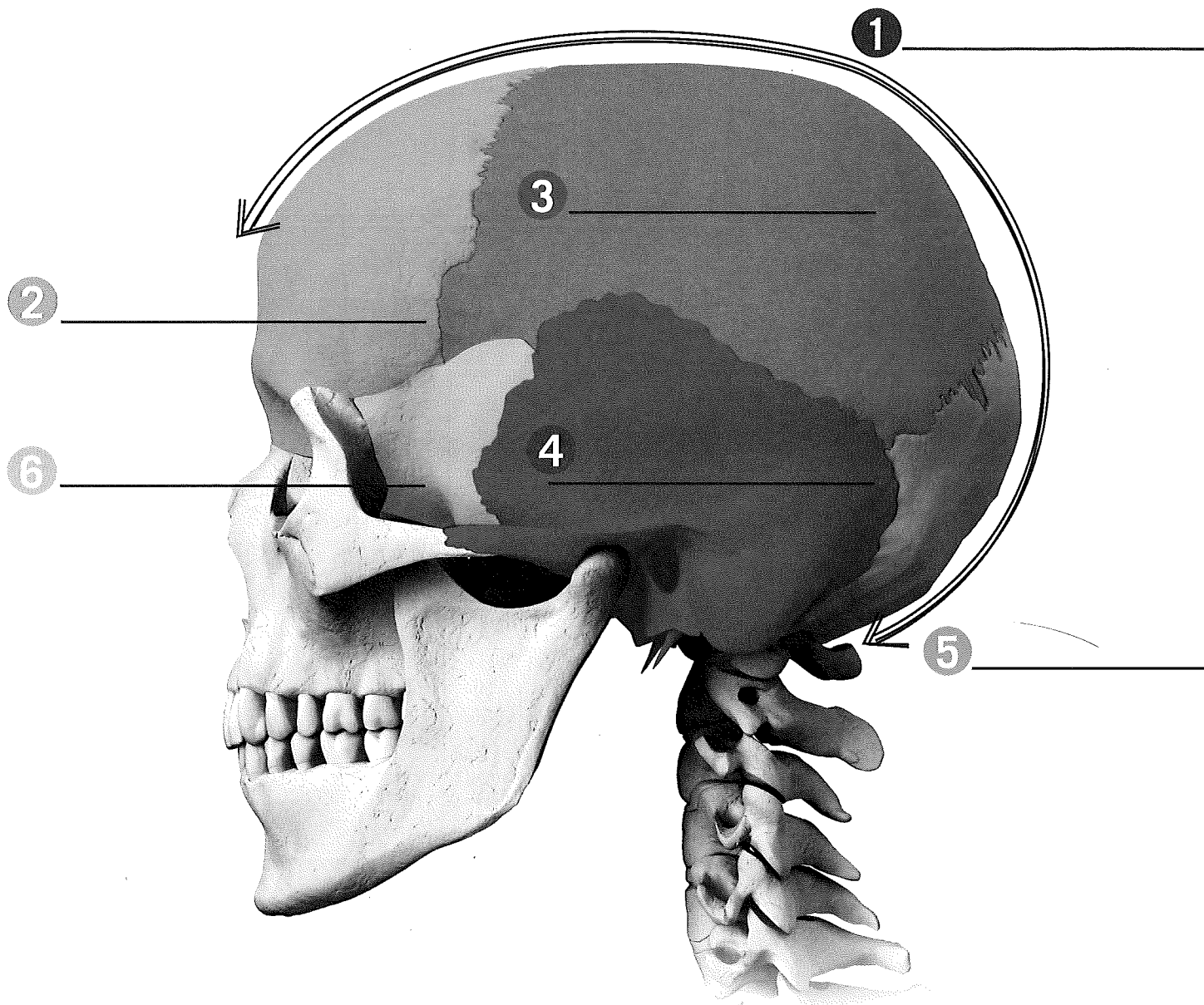
DISORDERS OF THE HAIR	CHARACTERISTICS	EXAMPLE	SERVICE
Fragilitas Crinium			
Hypertrichosis			
Monilethrix			
Trichoptilosis			
Trichorrhhexis Nodosa			

DISORDERS OF THE SCALP AND HAIR	CHARACTERISTICS	EXAMPLE	SERVICE
Pediculosis Capitis			
Scabies			
Tinea			
Tinea Capitis			
Tinea Favosa			

DISORDERS OF THE FOLLICLE	CHARACTERISTICS	EXAMPLE	SERVICE
Furuncle			
Carbuncle			

 Recommend your Guest see a Medical Professional

BONES OF THE HEAD



- 1. covers the top and sides of the head and face
- 2. bone that forms the forehead
- 3. consists of 2 bones that form the entire crown

- 4. consists of 2 bones that form the lower side of the head below the occipital
- 5. bone that covers the back of the head and sits directly above the nape
- 6. joins all the bones of the cranium